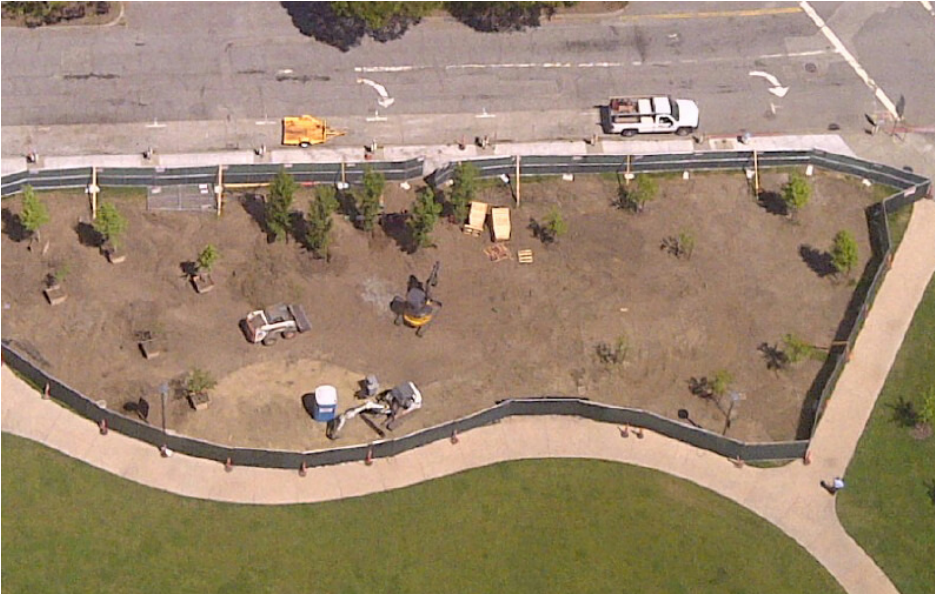


Waterfront Playground Becomes A Reality



VIEW FROM ABOVE--Construction workers begin grading and drainage work at the long-anticipated Waterfront Playground at Sue Bierman Park, a neighborhood effort comprising nearly three years of volunteer work. Photo by Christopher Meany.

New Waterfront Plan Being Developed

By **JUNE A. OSTERBERG**

The significant Planning Studies undertaken to plan the future of San Francisco's rapidly-changing waterfront, reported in the *BCNA Record* last fall, have been under way since early this year.

The comprehensive new study, billed as the San Francisco Waterfront Planning Process, is a joint endeavor of the BCDC (SF Bay Conservation and Development Commission) and the Port of San Francisco.

THE TWO POWERFUL waterfront agencies (one State and one City) first formed a sizable Working Group, consisting of interested stakeholders, to assist them.

BCNA Board Member Bob Harrer, Second Vice President, is a member of this Working Group. The coordinators are BCDC Senior Planner Lindy Lowe and Diane Oshima, Assistant Deputy Director, Planning and Development, for the Port.

The central issue motivating creation of the current study was that the Port's construction of the James R. Herman Cruise Terminal at Pier 27 required an amendment to the BCDC's Special Area Plan (SAP).

IN THE LEAD-UP to crafting the SAP amendment to cover the new cruise terminal, staffs of the BCDC and Port saw an opportunity to broaden the study to include possible solution of other problems associated with far-reaching development of the 7.5-mile waterfront.

As a result, when the people who had agreed to serve on the Working Group first met, they were asked to apply themselves to a lengthened list of tasks:

- Locating a new open water basin between Pier 35 and China Basin
- Developing an open space program and design for the ends of Pier 27 and Pier 29

(Continued on Page 4)

After nearly three years of blood, sweat and tears, the badly-needed children's playground for our neighborhood has broken ground and is under construction.

The Sue Bierman Park Playground, aka the Waterfront Playground, is finally taking shape on the Embarcadero.

"All the playground equipment has been ordered, the grading and drainage work is underway and we are very excited about this marvelous addition to The City," said Raneer Lan, managing member of Friends of the Waterfront Playground and one of the individuals most responsible for the fundraising for the privately-built facility.

ONCE COMPLETED, the playground will be presented to the San Francisco Recreation and Parks Department as a "gift in place," and culminates a hard-fought battle to get this valuable children's resource built.

Because of the very limited number of sites available in the Financial District, an ordinance preventing any structures in Sue Bierman Park had to be amended by the Board of Supervisors before any plans or fundraising could be undertaken.

"We are very grateful to Supervisor David Chiu for his leadership on this important City issue," said Lan.

Every vote at both the Rec and Parks Commission and the Board of Supervisors has been unanimous in favor of the Waterfront Playground.

WITH MORE THAN 1,000 children now living or going to day care within a quarter mile of the Ferry Building, the Barbary Coast and Rincon Hill areas of the City were the most underserved of any place in San Francisco when it came to children's resources and services.

But that soon will be changing.

"Construction is expected to take 10-12 weeks and there will be a grand opening celebration and ribbon-cutting ceremony, likely sometime in July," added Lan.

(Continued on Page 2)

Waterfront Playground Becomes Reality

(Continued from Page 1)

The playground will feature state-of-the-art play equipment for the children, including a popular "Geo Dome" structure for climbing and exercise. The entire facility will be ADA-compliant, and many parts of the equipment were constructed from recycled material.

WHEN THE final cost analysis for creating the playground was unveiled, many thought the funds could never be successfully found.

"With a budget approaching \$1 million, it was a major effort to get the money raised," said Adhamina Rodriguez, founding and managing member of the Friends of the Waterfront Playground.

"Ranee and her husband Jeremy Liew have been instrumental in raising the money," she added.

THE FUNDS have been committed from a number of sources, including many large and small individual donations from people all over San Francisco, and nearly a dozen major corporations. Also the project was awarded \$200,000 from the Community Opportunity Fund,

which is City money from the 2008 Parks Bond.

A number of firms and individuals are also contributing services on a pro-bono basis, including **Roma Design Group** (the design firm that originally created Sue Bierman Park), **Tectonics** (architects of record), and Friends Member **Rodriguez**, who is performing the duties of construction manager for the project. Rodriguez is an architect and project executive at Swinerton Builders, the company that won the bid to construct the playground.

NOT ONLY WILL San Franciscans be able to enjoy the playground, hundreds of thousands of families strolling along the Embarcadero finally will have a safe and child-friendly place for their kids to play.

Plaques recognizing the major donors to the fundraising effort will be installed on hand-made Heath Ceramics tiles that will be permanently installed along the perimeter of the playground.

Infrastructure Financing A Boon To Port of SF

By **JUNE A. OSTERBERG**

The Port had many reasons to celebrate its 150th Anniversary, starting April 24. One certainly could be the advent of the Infrastructure Financing District.

Perhaps because the Port now has this funding device, it has been some time since the words "cash-strapped" have been applied to its financial condition.

(It should be noted again that the Port is an enterprise agency, i.e., self-supporting. It was designated as such by the State of California even though it is a major arm of the City. San Francisco's International Airport and its Public Utilities Commission are also enterprise agencies.)

THE PORT had been "seeking the authority to capture tax increments to fund public improvements" along the waterfront since 2005, according to a Memorandum of Port staff last December.

Earlier, Port staff had written that "IFD Law was crafted to allow IFDs to function much like redevelopment areas... IFDs do not increase tax rates, rather, they rely on increases in the property tax base within the IFD.

"Like redevelopment, the fundamental justification for tax increment financing is the notion that but for public and private investment made possible by tax increment financing, development and the resulting property tax increases would not occur.

"In contrast to redevelopment law, the IFD law does not require the public agency to make a finding of blight or a set aside of a portion of the tax increment for affordable housing...

UNDER STATE LAW, the Port's eventual authorization by the Board of Supervisors to have an IFD led to its ability "to finance public infrastructure where all of the property in the district is publicly-owned without an election, by the adoption of an ordinance."

Among changes in IFD law specific to San Francisco include:

"Requiring that 20% of the tax increment that the Port receives from an IFD be set aside for shoreline restoration, removal of bay fill, or waterfront public access to, or environmental remediation of, the San

(Continued on Page 4)



PORT FESTIVITIES—Stilt-walkers entertain young and old during the Port of San Francisco's 150th Anniversary Celebration, held April 24. The event continued with Maritime Day on the Waterfront on April 28, which was also the "Opening Day on the Bay." More events will be held throughout 2013. Photo by Dave Rauenbuehler.

8 Washington Controversies Continue to Brew

Just when it seemed that the matter of developing the project known as 8 Washington would take a break from the headlines, the issue has kicked again into overdrive.

On April 22, developer Simon Snellgrove announced that his San Francisco Waterfront Partners group would be attempting to put a competing initiative measure on the November ballot to be known as “Parks, Jobs and Housing” in an attempt to trump a competing measure.

A COALITION of neighborhood and environmental groups has already qualified a referendum on the 8 Washington waterfront height limit increase for the November ballot, which polls show voters strongly oppose by a 2-1 margin.

Politically-connected San Franciscans were left scratching their heads a bit over the second ballot measure.

“This is a desperate ploy so deceptive it should come with a Surgeon General’s warning label marked ‘Hazardous to the Health of Our Waterfront,’ ” said Jon Golinger, Campaign Director for the No Wall on the Waterfront Coalition.

“**SIMON SNELLGROVE’S** ballot measure is 10,000 words long, but the 10 words that really matter are hidden deep inside because they would increase height limits on San Francisco’s waterfront for a high-rise over 50 feet higher than the old Embarcadero Freeway. When voters realize that, polls show they will resoundingly reject it,” Golinger added.

Tim Redmond, writing in the *San Francisco Bay Guardian* was even more confused by the plan.

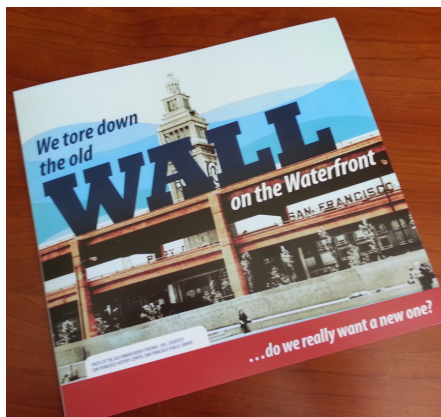
“We can’t figure out what Snellgrove is up to, since his plan makes zero political sense,” he wrote.

“**THE REFERENDUM** needs a “no” vote to block the project. If voters don’t like increased height limits on the waterfront, they won’t like his initiative, either. And if all that this does is confuse the voters, they’ll tend to vote “no” on both measures. If anything, he’s only hurting himself.”

Nevertheless, if SF Waterfront Partners can pour enough money into advertising and if the turn-out is as low as predicted, anything is possible, according to one political consultant.

The group known as “No Wall on

the Northeast Waterfront” has not been idle during this period. They have sent out a glossy color mailing piece to thousands in San Franciscans inviting



EARLY MAILING EFFORT—The “No Wall on the Waterfront” coalition has sent out this mailer to voters well ahead of the November election.

voters to join the campaign to stop the 8 Washington height increase. Recipients of the mailing piece are asked to volunteer, donate, host a house party or put up a house sign.

“We are encouraging people to support the campaign by making a donation via the website at www.NoWallOnTheWaterfront.com/donate or by hosting a house party to invite friends and neighbors to learn more about it,” said Golinger.

“People can call 415-894-7008 for more info about hosting a party,” he added.

ALSO HITTING the news was the fact that the San Francisco City Ballot Guide that must be sent to voters before the November election will be the thickest, heaviest and most expensive ever. That’s because Snellgrove’s group and the Port of San Francisco insisted on adding every word possible to the Board of Supervisors’ bill approving the project, and that way making it difficult to mount a referendum effort.

“Developer Simon Snellgrove and his lawyers’ sneaky shenanigans at City Hall to try and make it impossible to qualify the 8 Washington height increase referendum will now cost SF taxpayers hundreds of thousands in unnecessary printing and postage costs for a 500-page ballot book,” said former Supervisor Aaron Peskin.

This issue was also paramount when District 3 Supervisor David Chiu tried to get the Board of Supervisors to reverse their vote on approving the project on Sept. 4, 2012. But to no avail. The Board maintained their 8-3 vote approving the project for a second time, despite the warnings of the expensive ballot book bulge.

AND IN EARLY March, it was reported that the 8 Washington project could threaten the city’s sewer system—both during construction and in the event of a major earthquake.

Other parts of the sewer system, including two underground vaults and an overflow structure, would also be at risk, according to a Feb. 22 draft report by an outside engineer hired by the San Francisco Public Utilities Commission.

“These utilities are susceptible to damage ... that can be caused by the (8 Washington) construction,” wrote William Bergeson, an engineer with AECOM.

After construction, the project “may also adversely affect the existing SFPUC facilities due to the seismic response of the completed building,” and “there may be increased liability for the SFPUC due to an unforeseen force main rupture since the completed building is in very close proximity,” Bergeson wrote.

THE PIPELINE and its related network carry about one-fourth of the city’s sewage, PUC spokesman Tyrone Jue said.

Proponents of the development say that before they are granted a building permit, these issues will be addressed.

Meanwhile, it was a stalemate at the SF Democratic Central Committee on April 24. The group was poised to endorse the “No Wall” referendum. But on a last-minute procedural maneuver by the pro-project forces the group had to postpone the vote.

The issue will be taken up again on May 22 at 7pm in the basement of the State Building, 455 Golden Gate Ave.

“There were 60 members of the public who testified before the committee during the meeting—50 of them urged opposition to the 8 Washington height increase measure, and 10—who were paid by the developer to be there—urged delay,” said Golinger.

Finally, no news on the City’s investigation of emails that allegedly showed Port personnel working behind the scenes to affect the coalition’s referendum effort.

New Waterfront Plan Being Developed

(Continued from Page 1)

- Creating a new public plaza and open water basin at Fisherman's Wharf
- Developing a strategy for preservation and management of the Embarcadero Historic District
- Evaluating the relationship between maritime uses and public access

CRUISE TERMINAL / AC VENUE CELEBRATES COMPLETION

In further Cruise Terminal news, it was February 26th that City officials celebrated the completion of the first phase of construction in a ceremony at Pier 27. The new terminal will replace aging Pier 35 as the City's *primary* cruise terminal.

But first, the new terminal building will serve as the headquarters of the 34th America's Cup races starting in late summer. It will be turned back to the Port late in the year and will open for cruise passengers in 2014.

For those who may wonder at the term "open water basin" the Staff statement to the Working Group said that the purpose of open water basins set aside from Bay traffic is "to improve the health and ecology of the Bay, increase physical and visual access to and from the Bay," as well as "to increase spaces for water-oriented recreation and to provide relief from intensely used areas of the waterfront."

The open water basins are Brannan Street Wharf, Rincon Point, Broadway and Northeast Wharf. The latter is eliminated in the Cruise Ship Terminal Amendment, which resulted in the requirement that a new open water basin be found "between Pier 35 and China Basin."

Infrastructure Financing To Benefit Port of SF

(Continued from Page 2)

Francisco waterfront.

"Authorizing the establishment of project areas within Port waterfront district, each with a distinct base year, and authorizing allocation of the tax increment from each project area for up to 45 years."

Among projects planned to benefit from the establishment of the Port's IFD are:

The new Cruise Terminal at Pier 27, SWL 351 (8 Washington park), Piers 30-32 (now slated for the Warriors' organization) and SWL 337 (Giants' organization Mission Rock project).

BCDC and Port staffs promised the Working Group that "Perspectives and issues will be advanced to the Port and BCDC Commissions whether or not they are recommended by staff."

The participants were assured that "the decision-making process would not be formal, but the people will be asked to vote." It also was stated that there will be a public workshop.

Quarterly updates on the results of the work will be supplied to the two commissions.

The Working Group has been on field trips and have peered at Piers 27 to 33. They also have looked at the plaza behind the Ferry Building, proposals for which already have provoked controversy.

Old finger Pier 31, which always figured in several earlier proposed development projects, is closed because of deterioration but is included in the Historic District and is a special case for study.

The next meeting of the Working Group is scheduled for May 23.

Stephen Barclay To Be Guest Speaker At BCNA Annual Meet

This year's BCNA Annual Meeting will be held on June 2, 2013 at 5A5 Steak-lounge and will feature the CEO of the



Stephen Barclay

America's Cup Event Authority, Stephen Barclay as guest speaker.

It also will be a combination Annual Meeting and Sunday Social Event.

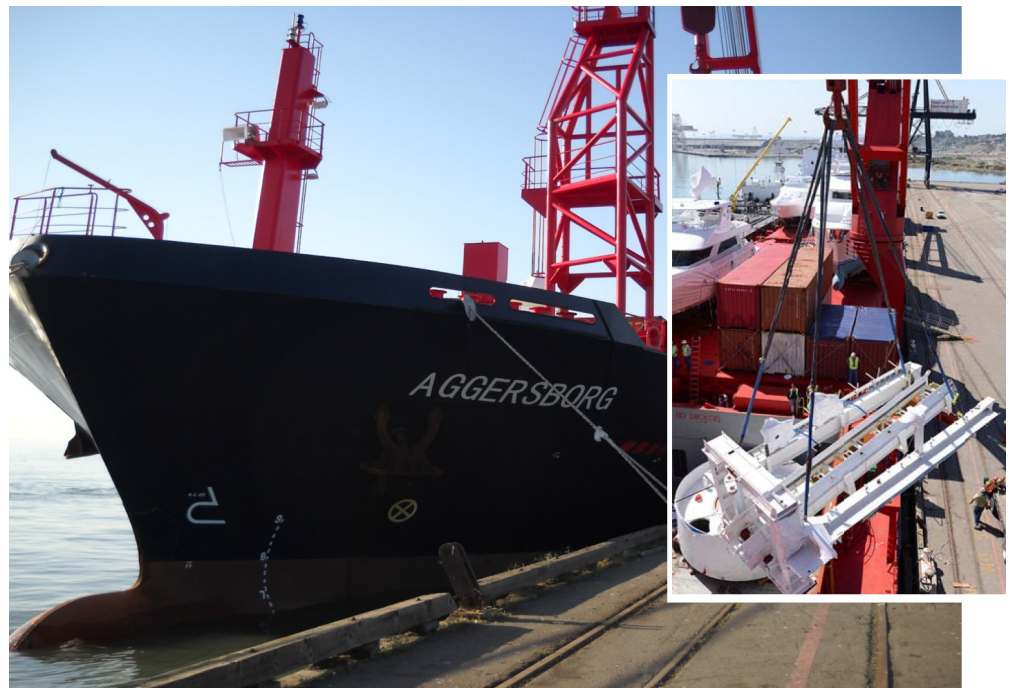
To avoid a conflict with the first America's Cup music event featuring Sting at the new AC facility at

Pier 27, the annual meeting will be held an hour earlier than normal from 3 to 5 pm.

The meeting will feature election of the Board of Directors and an update on the issues affecting the Barbary Coast neighborhood during the last 12 months.

Snacks will be provided, compliments of Steve Chen, Board Member and owner of 5A5 SteakLounge, 244 Jackson Street.

Discount drinks will be available for \$5.



BORING MACHINES ARRIVE—On April 22 the M/V Aggersborg unloaded the first of two tunnel boring machines (inset) at Pier 80 for use on the controversial Central Subway which will run from South of Market to Chinatown. After boring underground, the two machines will be brought to street level at the site of the old Pagoda Theater in North Beach, despite that fact that there are currently no plans or finances to bring the subway beyond Chinatown. North Beach area residents are concerned about building foundation damage, groundwater issues and environmental problems. Photo by Jay Ach.

Notes From The Golden Gate Tenants Association

A Remnant of the Past By Martie Young, Vista South

On the west side of Sydney G. Walton* Square, which is the name given to our much cherished small park across from Safeway, there is a brick structure that signals the entrance from Front Street to the patch of lovely ground beyond that serves as our community front yard.

There is no plaque or label of any kind that informs us of what this somewhat forlorn looking archway means or how it relates to the space around it. Older residents of the neighborhood, however, refer to it as the Colombo Arch, a reference to a time when the whole area around here was known as the Colombo market.

Sitting on a bench in the park, or for that matter on your sofa in your apartment, you may not realize you are on land that once served a huge bustling wholesale produce market for the city of San Francisco and the Bay Area. The market covered the tract of land from Broadway on the north to Washington on the south and from Battery on the west to the Embarcadero piers where ships once unloaded in great numbers. Older photographs testify to the important role the Colombo arch played as the symbolic gateway to the market back in the earlier part of the 20th century.

By mid century the market was no



YESTERDAY AND TODAY—The sole surviving remnant of the days when Sydney Walton Park was a produce market is the historic but unmarked arch on Front Street.

longer economically healthy and the area was in physical decline. Beginning in the early 60's urban renewal created the Golden Gateway complex that we live in now, and what had been a raucous melding of men, animals, trucks, and produce has become our current mix of cyberspace workers, retirees, and Starbuck coffee drinkers. There is nothing left of that older world except for the Colombo Arch.

The Colombo Market gate had been covered in ivy for many years, but once the ivy was removed the husky proportions of the arch became clearly visible. It can hardly be described as an elegant structure, and the peeling stucco facing

does not add any particular charm. But it still stands strong today, even if it seems unsure of its role in the 21st century. It is the last physical reminder of what this place had once been, and it serves us well in that role: the sole remnant of our neighborhood's very different and lively past.

** Sydney Grant Walton was a San Francisco banker who lived from 1901 to 1960. Reportedly he was a businessman, cultural leader and vice-chairman of the SF Redevelopment Agency. The plaque outside the park states that he was "vital in the formation of the concept and development of the Golden Gateway."*

It's Time For YOU To Join The

BARBARY COAST NEIGHBORHOOD ASSOCIATION

Yes, I want to JOIN OR RENEW my membership in the Barbary Coast Neighborhood Association for 2013. I have enclosed my check made payable to the BCNA corresponding to my membership type.

Name _____

Address _____

San Francisco, CA Zipcode _____ Phone _____

Email Address _____

@ _____

Please Mail To:
BCNA
640 Davis Street #28
San Francisco, CA 94111



(Please Clip and Mail)

Type of Membership:

- Individual Membership \$25
- Family Membership \$35
- Small Company Membership
(Fewer than 10 employees) \$50
- Large Company Membership
(10 or more employees) \$150

Additional Contribution \$ _____

Total Enclosed \$ _____

June
Osterberg's *On The Waterfront*

San Francisco--perched on the top of a peninsula on the Pacific--has become a crowded and contentious place.

But it remains a city of neighborhoods. Neighborhoods think about parks and other open spaces when the living turns uneasy.

Voters showed that last November when they approved the \$195 million Clean and Safe Neighborhood Parks General Obligation Bond.

It included \$34.5 million for waterfront park projects on Port property.

It is further favorable news that Port staff has identified an appropriate project for the first issuance of the 2012 GO Bonds in June. This popular project is the Northeast Wharf Plaza and Pier 27/29 Tip.

The bond money will go toward the design and construction.

BCNA

However. An "Informal Presentation on Pilot Recognition Program for the Port of San Francisco at Piers 27/29" was on the agenda at a Port Commission meeting in April.

Initially, America's Cup organizers expressed confidence that raising multiple millions to stage the prestigious races in Bay waters would be smooth sailing.

Obtaining the funding from Downtown proved to be a challenge.

The idea floated to the Commissioners was "to encourage the financial support of individuals, families and local businesses."

To do this, a "Pilot Donor Recognition Program for the Port" would be created. Where? Piers 27/29.

The general feeling seems to be that someone has swallowed something the proverbial hook, line and sinker.

BCNA

Another questionable notion was proposed in April by Equity Office Properties, master tenant of the Ferry Building: "Evaluating the use and opportunities for improvement of the Ferry Building Plaza."

According to the Port's memorandum to the Port Commission, "EOP proposes an 18-month pilot project to conduct various public events, observe user patterns and successes, improve Ferry Building loading and service operations, and provide for interim parking in the Plaza."

It was alleged that that would help "the EOP and the City celebrate the 10th anniversary of the historic rehabilitation of the Ferry Building."

Jan Blum, well-regarded community activist, reacted in a letter to Lawrence J. Goldzband, BCDC Executive Director, that that would mean the public plaza would be used as a parking lot.

Her April 15 letter continued--"I am adamantly opposed to this idea for several well founded reasons:

"This is a public space

"Planning should be consistent with the Waterfront Plan

"The process of determining use should be an open and accountable process

"Planning must include walking and cycling and NOT exclusively on cars and parking.

"Please oppose the Port's ill thought-out use of this public space."

BCNA

A huge threat to orderly and comprehensive waterfront planning--not to mention the ability to drive on The Embarcadero--is the unseemly hasty obtaining for the Golden State Warriors a choice spot on the waterfront.

That is Piers 30-32, which America's Cup 34 was going to use but later relinquished. The location is perilously close to the Giants emplacement.

A few comments from outraged opponents:

In March, Edward Kerry, "A growing number of San Franciscans agree with former Mayor Art Agnos and Judge Quentin Kopp about the negative effects...allowing too little time to consider the serious concerns--the blocking of easy access to the Bay, the loss of precious open space, and undoubtedly an increase in traffic, noise, crime, and litter.

"City government must protect us from projects that overstep long-established boundaries....and the loss of a spectacular view..."

Rudolph Nothenberg, retired Chief Administrative Officer, on April 29:

"I have never, until now, felt the need to oppose a major Port initiative. The Piers 30-32 proposal is however a very bad proposal..."

"The process issues that bedevil this project stem entirely from the overly aggressive schedules that the Warriors have demanded of the Port/City...."

BCNA

Not incidentally, BCDC's May 16 meeting will include a staff report on (1) the role of the State Lands Commission, the Legislature and BCDC in implementing the Public Trust Doctrine; (2) the history of development proposed on Piers 30-32; (3) the effect of the bill (AB 418) on the Commission's ability to review development of the site; and (4) the effect of the bill on the Bay, Public Trust uses, and public access.

BCNA

An historical note: In our article on Infrastructure Financing on Page 2 there is a reference to "a finding of blight" that formerly was a pretext for initiating redevelopment of land.

"Blight" was a key word in the massive project of "urban renewal" when the old Produce District that sprawled all over "our" area was rather summarily demolished in the Sixties.

Enter the developers of that time, and their construction of the tall, slim buildings of the Embarcadero Center and yes, the building of the Golden Gateway. The Golden Gate Commons was Phase 3.

The well-loved Produce Market occupied this vast space: from the waterfront on the east to Broadway on the north, and from Jackson Square on the west to Market Street on the south.

Bill Sauro's **RESTAURANT ROUNDUP**

It seems that the Embarcadero zone of the BCNA is experiencing a restaurant renaissance. Three noteworthy new spots have opened in the last few weeks in high-visibility locations on the Bay. First to make its debut was **Hard Water**, Charles Phan's (of Slanted Door fame) New Orleans-themed spot which puts a big emphasis on crafty cocktails, since it's really just a bar. The New Orleans-inspired menu is full of booze friendly bites, like cornmeal-crusted alligator and stuffed artichoke, plus larger dishes like seafood gumbo, fried chicken, smothered pork shank, and okra étouffée. There's also a raw bar, with crab, shrimp, oysters, and Louisiana crawfish. Pier 3, The Embarcadero. (415) 392-3021. <http://hardwaterbar.com>.

Next came the resurrection of the old Lafitte location, this time by celebrity chef Michael Chiarello. His new Spanish spot **Coqueta** is making waterfront waves with more than 20 varieties of tapas, and even more trendy cocktail selections. The restaurant features an open kitchen including a custom-built wood-fired grill for the hot tapas. The main "cocina" dining area offers communal or regular tables (which are a bit taller than usual so you can enjoy the water views). The outdoor, glass-enclosed terrace room (called Bar 5) that is reserved for walk-ins customers. Pier 5, The Embarcadero. (415) 704-8866. <http://coquetasf.com/>

Finally, with the opening of The Exploratorium last month, we have a third Embarcadero hot-spot created by local chef Loretta Keller and her partner, Clay Reynolds, of COCO500. It's called **Seaglass**, and it is situated in the back of the museum space—right on the water—offering fantastic bay views. There is a long raw bar where you can slurp down some oysters. Cocktails are also a big part of the operation with a cool watery bar exhibit. There are a variety of sandwiches, salads, quesadillas, and tacos made with seasonally changing ingredients, plus Keller's fried green beans and "living foods" like kimchi, sauerkraut, and Japanese pickles. The restaurant has the same hours as the museum: Fri-Tue 10am-5pm, Wed 10am-10pm, Thu 10am-5pm and 6pm-10pm. Pier 15, The Embarcadero. (415) 528-

4893. <http://www.exploratorium.edu/visit/restaurant-cafe>.

* * *

Will this incarnation be the one that breaks the "curse?" Come June, **Roka Akor** will be situated on the corner of Jackson and Montgomery. Located in the notorious location that previously housed the likes of the Cypress Club, Scott Howard and Zinnia, the upscale Japanese steak, robata and sushi restaurant is overhauling the space with the hope of getting rid of the bad luck. They've even changed the official address from Jackson to Montgomery St. Roka Akor is the brainchild of Dr. John N. Kapoor. His JNK Concepts opened a Roka Akor in 2008 in Scottsdale, Arizona. Since then, the company's portfolio has grown to include five restaurants in the Phoenix market, plus two Rokas in the Chicago Area. His San Francisco version will have about 200 seats, with about a third of that number in the new subterranean lounge. Running the bar there will be Daniel Hyatt, who spent the last six years behind the bar at the Alembic. At the Roka Bar, as it has been dubbed, he'll be slinging house-infused shochu, craft beers and an extensive international whiskey collection. 801 Montgomery St. <http://www.rokaakor.com>.

* * *

For those who lament that it's impossible to find true NY style deli food in San Francisco, there's a new possible solution. It's called **Shorty Goldstein's** and it's a breakfast and lunch operation featuring authentic chopped liver, a variety of sandwiches on rye and housemade and juicy pastrami sourced from Double R Ranch. The space is just across the street from the Crocker Galleria, and is meant to be primarily takeout, but there are 25 bright turquoise seats where you can plunk down at either a counter and some tables. Mon-Fri 8am-4pm. 126 Sutter St. at Montgomery, (415) 986-2676. <http://www.shortygoldsteins.com>.

* * *

After more than 25 years, the funky old dive-bar/restaurant Gio's is no more, having been reincarnated as **Sydney**

Town Tavern. Owned by the operators of Irish Times, they have opened up the interior and made the menu more "bar-food-like." Interestingly, the name comes from the original term for our neighborhood: The Barbary Coast was initially called Sydney Town since it was populated by a villainous and lawless group from "down under" that began to wash ashore in San Francisco as early as 1849. 531 Commercial St. (415) 433-1949. <http://sydneytownsf.com/>

* * *

Some of The City's most visible and noteworthy restaurants have taking it on the chin lately. Masa's closed and the fate of Big 4 is still up in the air. But the casualty that is closest to home for Barbary Coasters is **Tommy Toy's**, the opulent nouveau-Chinese spot. Part of the reason for closure is the fact that fancy Chinese fare has fallen out of fashion in favor of more rustic, regional dishes. Partner Alon Yu cites "a changing market demographic and some lease issues" as the culprit, and will go into semi-retirement after the restaurant closes. The space has reverted back to the landlord, and all that opulent decor was sold off.

* * *

North Beach News... The very busy Pete Mrabe of Don Pisto's has opened none-other-than **Pisto's Tacos** taking all but one or two of the tacos off the menu at Don Pisto's. At the new 35-seat taqueria, Mrabe is serving small, spicy, street-style tacos with charred meat, about 10 meats in all, from lengua to grilled chicken to suadero (brined and braised brisket.) Most of the tacos are \$2, with a few at \$2.80. 1310 Grant Ave. at Vallejo. (415) 395-0939. <http://donpistos.com>.

* * *

Also in North Beach... Owners of Vicoletto, Francesco Covucci and Peter Fazio, are taking over the **Steps of Rome Caffè** location. It will be called **Il Casaro Pizzeria and Mozzarella Bar**. Look for Italian mozzarella, burrata, plus pizzas and panuozzo, a sandwich made with pizza dough. 348 Columbus Ave. at Grant. (415) 397-0435.

A Message From The Board

Many people are now aware the America's Cup organizers have scheduled a concert series this summer at Piers 27-29. Little notice was taken of the concert plans initially. But that changed as the specific details of the plans were publicized earlier this year.

Up to 40 concerts in a temporary amphitheater for 9000 people were originally envisioned. This rightfully created concerns from nearby residents. Subsequently, numerous discussions have taken place between neighborhood residents and the organizers.

Several discussions involving a smaller group— including three members from BCNA's Board – have been particularly constructive.

Since the original permit application was made March 1, the organizers have made a number of concessions to mitigate the impacts of the concerts.

These concessions include:

- Reducing the maximum number of allowable concerts from 40 to 30
- Shifting the curfew for most concerts to an earlier ending time
- Committing to perform sound tests at selected concerts and work with the neighborhood

- Instituting regular meetings with neighborhood residents throughout the series to discuss issues as appropriate
- Pledging that Live Nation would not to seek to re-install a similar amphitheater at the site for the next 10 years

The efforts by neighborhood residents have been instrumental in achieving these concessions. In addition, the residents are continuing to meet with the America's Cup organizers, the SFMTA and the SFPD to discuss specific issues involving traffic, parking, etc.

Plans are also being made to give the neighborhood means to raise concerns through a community hotline, additional meetings, etc. All parties are working in good faith to address neighborhood concerns and create a positive concert experience.

Construction of the temporary amphitheater is nearly finished. A link showing the schedule of concerts is located at <http://www.americascup.com/en/concert-series>.

In a recent development, the city's Board of Appeals denied an appeal and upheld the concert permit at its May 8 hearing.

—Bob Harrer



A PUBLICATION OF
THE BARBARY COAST NEIGHBORHOOD
ASSOCIATION

www.BarbaryNeighbors.org

MANAGING EDITOR — BILL SAURO
WRITTEN BY JUNE A. OSTERBERG

NEWSLETTER WEBSITE:
www.BarbaryNeighbors.org/News

BOARD OF DIRECTORS

OFFICERS

PRESIDENT
DAVID ALBERT

1ST VICE PRESIDENT
DIANA TAYLOR

2ND VICE PRESIDENT
BOB HARRER

TREASURER
CAROL HOLLAND PARLETTE

SECRETARY
BILL BENKAVITCH

BOARD MEMBERS

MORTON BEEBE
STEVE CHEN

JIM CUNNINGHAM

JIM HOWELL

RANEE LAN

MARY LOU LICWINKO



THE BARBARY COAST
NEIGHBORHOOD
ASSOCIATION

640 DAVIS ST / # 28
SAN FRANCISCO, CA 94111