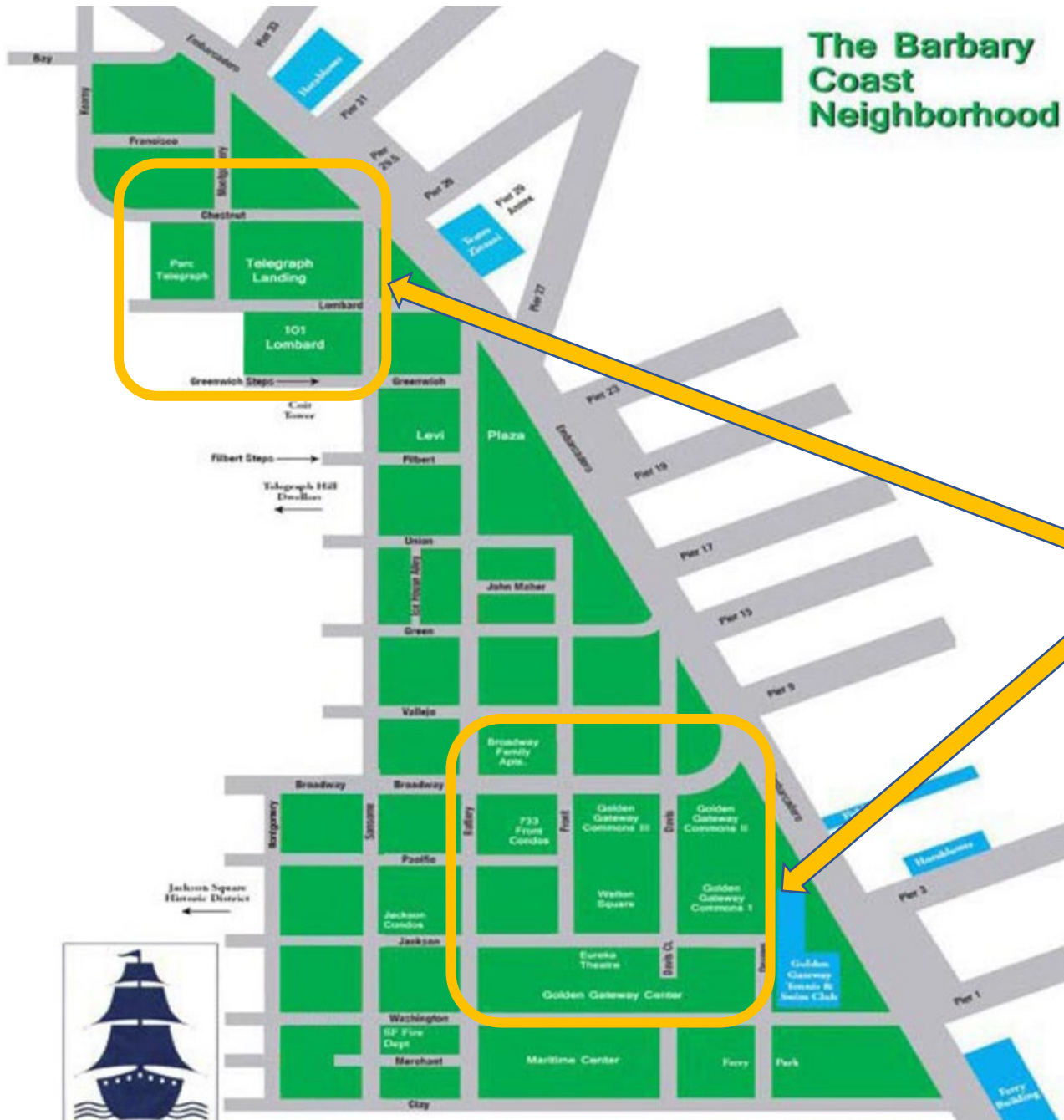




# BCNA Safety Goals, Strategy, and Results



## Major Residential Neighborhood Zones in the Northern Waterfront

### Northern BCNA:

- Condos, Senior Housing Apts\*
- Total dwelling units = 988
- Total Constituents ~ 1,976
- Levi Plaza Park, Fisherman's Wharf

### Dense residential zones

### Southern BCNA:

- Apts, Townhouses, Condos\*\*
- Total dwelling units = ~ 1,909
- Total Constituents ~ 3,818
- Walton Park, Sue Bierman Park

\*Telegraph Landing, 101 Lombard, Parc Telegraph Condos, Senior Housing

\*\*Gateway Apts/Townhouses, Gateway Commons Condos, Broadway/Sansome/Davis Family Apts



# BCNA Safety Action Plan: Goals-Strategy (2020-2023)

## GOALS

- **Improve Pedestrian Safety**
  - SFMTA Quick Build Projects
  - Traffic Calming improvements
  - Motorized scooter regulations
- **Reduce Community Disruption**
  - Speeding vehicles/Side Shows
  - Vehicular Noise
  - State Legislation
- **Extend Personal Security and Property Crime Programs**
  - SF Safe City Camera Program
  - SFPD/City Ambassador Program
  - Downtown CBD partnership



## STRATEGY

- **SFPD Engagement**
  - Central Police Advisory Board
  - Community Meetings
  - Coffee with the Captain
  - Increased police presence
  - SFPD/SFFD appreciation
- **Local-State Government**
  - SFMTA/DPW engagement
  - Monitor/support pedestrian safety and noise legislation (e.g., AB2496 & SB1079)
  - Support motorized scooter regulation (Peskin)
  - Support Vision Zero goals, activities
- **Community Engagement**
  - SFPD-SFMTA Walk-about
  - Neighborhood events & forums
  - Neighborhood stakeholder meetings



# BCNA Safety Committee

## NORTHERN BCNA

- Paul Liao (**co-chair**; Telegraph Landing)
- Janice Kursky (Telegraph Landing)
- Frank Hartigan (Telegraph Landing)
- Barry Schiller (Telegraph Landing)
- Catherine Fallis (Parc Telegraph)
- Eveline Tapp (Parc Telegraph)
- Raymond Isola (101 Lombard)

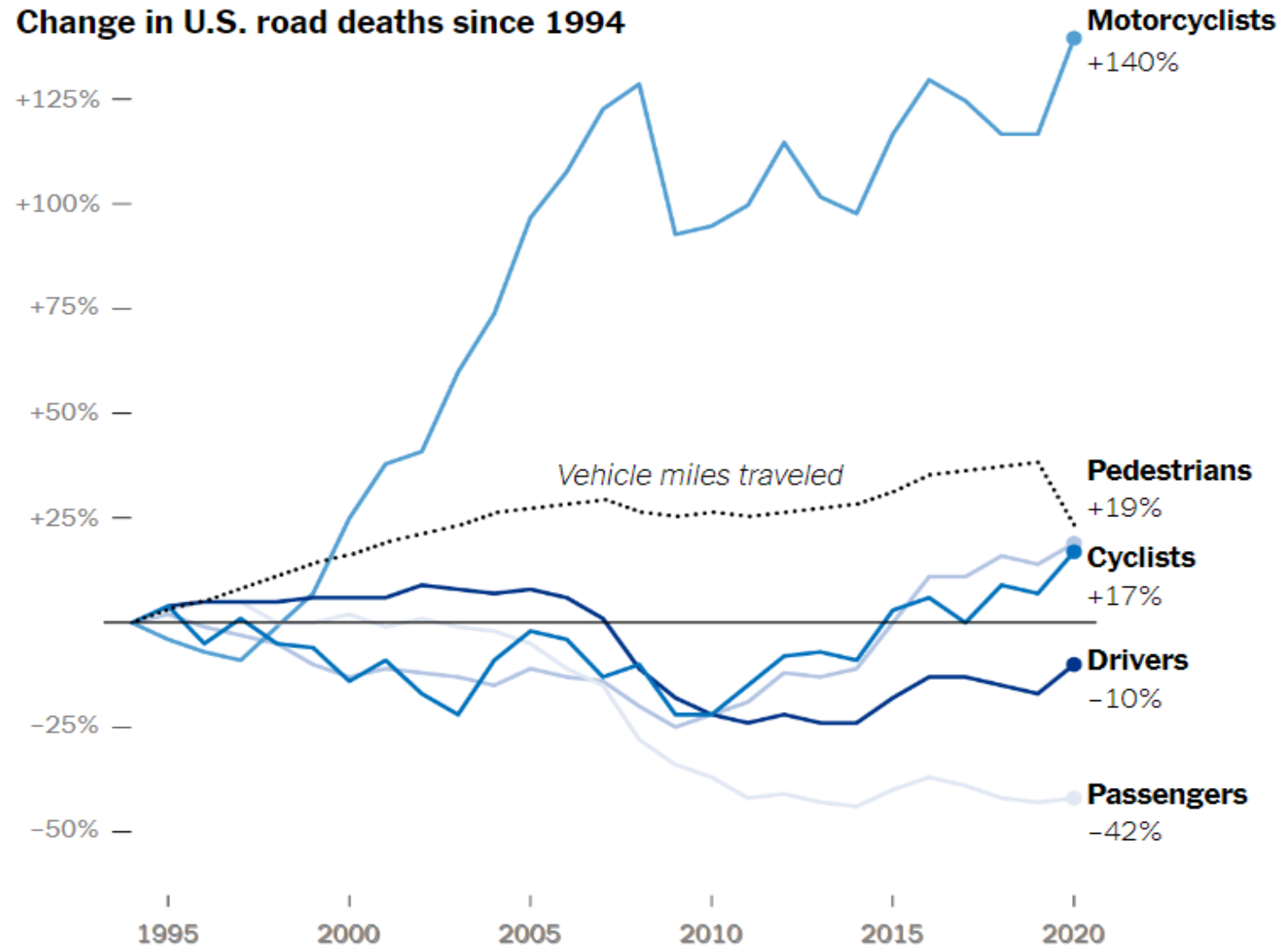
## SOUTHERN BCNA

- Rex Hesner (**co-chair**; Gateway Commons)
- Alec Bash (Gateway Tenants Assoc)
- Michele Hennessey (BCNA/GTA Board)
- Kevin Prichard (GTA)
- Anthony Carungay (Gateway GM)
- Michael Faklis (Broadway Apts)
- Shaquay Johnson (Broadway Cove)
- Margie Jones (733 Front HOA)
- Jim Seff (BCNA Board, CPAB; Gateway Commons)

# Pedestrian Safety- Community Disruption Goals & Action:

- Significant and measurable reduction in weekend speeding, stunt driving, and excessive noise created by cars and motorcycles on the Embarcadero, and other Barbary Coast thoroughfares.
- Completion of traffic calming installations in Quick-Build I program.
- Increased regulation and enforcement of motorized scooters on sidewalks.

Change in U.S. road deaths since 1994



Note: Motorcycle registrations doubled in the U.S. between 2002 and 2020. • Sources: U.S. National Highway Traffic Safety Administration; Insurance Institute for Highway Safety • The New York Times



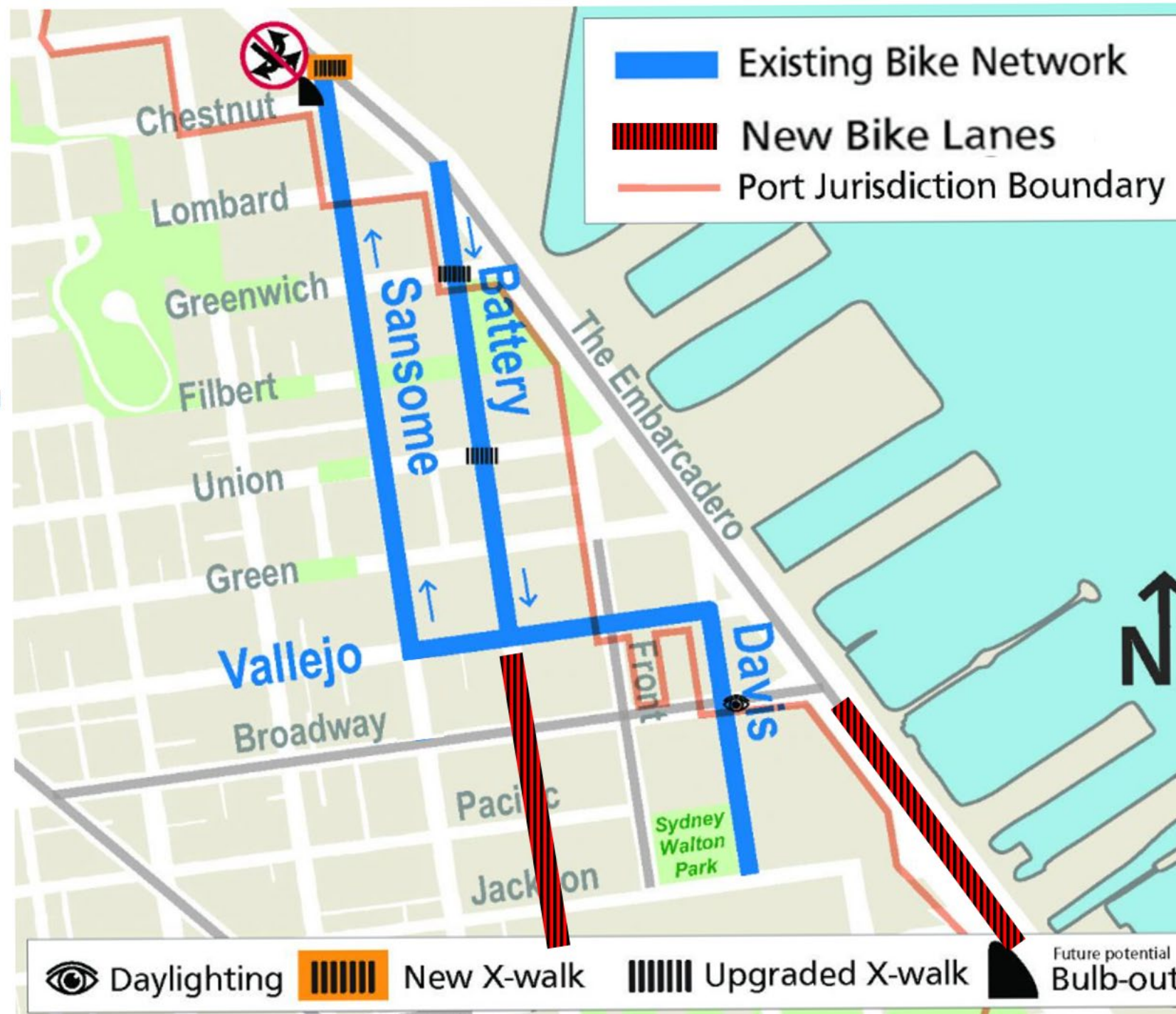
# Noise and Reckless Driving: The Embarcadero and Broadway “Drag Strip”





# ASSESSMENT (NORTH): SFPD-SFMTA Walk-Abouts Bring Project Modifications

Quick Build I started at the North End Barbary Coast neighborhood in 2019 with **new crosswalks** and **road restrictions**.





# BEYOND QUICK-BUILDS: Jackson-Drumm Improvements

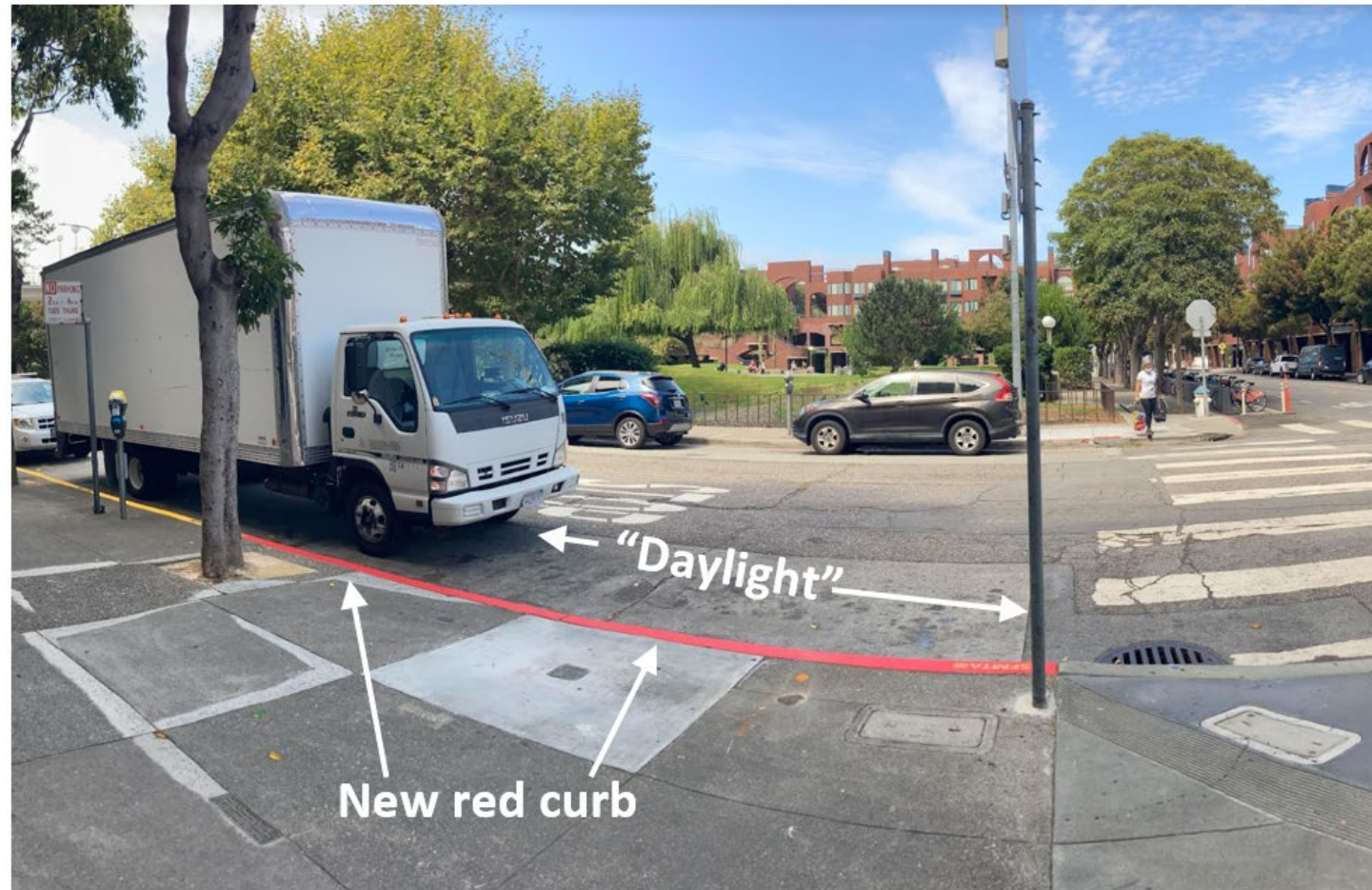
The wackiest corner in our neighborhood was done and then undone (due to repaving) by DPW!





# IMPROVEMENTS: Beyond Quick-Builds

- Added Curb/crosswalk, traffic dividers, daylighting, and repaving





# Quick-Build II: Battery Street Bike-Lane

- Extension of Sansome-Battery Quick Build I improvements
- Dual Bike Lane on eastside Battery from Vallejo-Market Streets
- Drastically change vehicle/traffic flow into/out of South End of Barbary Coast neighborhood
- Remove passenger loadings on Battery

## Safety Committee Requests

- 1-way bike lanes on Battery & Sansome
- Relocate 2-way bike lane to westside Battery
- Keep left turns on Broadway, Jackson
- Keep passenger loading at curb

## Plan modifications by SFMTA

- Keep Jackson Left Turn
- Keep passenger/commercial loading zones on Battery, Washington
- Add passenger loading on Jackson

## Continuing challenges

- Pedestrian safety threats at 550 Battery (Gateway Apartments) and 810 Battery (Broadway Family Apartments/Day Care Center)
- Not enough auto curb cuts for school/daycare drop off
- Back up of autos into crosswalks during rush hour driving south to Bay Bridge





- 1 Battery↔Broadway
- 2 Battery↔Jackson
- 3 Emb.↔Broadway
- 4 Emb.↔Washington
- 5 Drumm↔Jackson
- ✕ 810 Battery Hotspot
- ✕ 550 Battery Hotspot

# Changes to Access

The neighborhood will have major restrictions on vehicle access after SFMTA projects are complete:

1. **No left turn from Battery to Broadway**
2. **Restored left turn from Battery to Jackson**
3. Reduction of a left turn lane from the Embarcadero to Broadway
4. Reduction of Washington from two lanes to one lane

✕ **Two “hotspots” on Battery**



# Restricted Broadway turn; Divided Passenger Zone at 810/820 Battery—Kai Ming Preschool & Broadway Family Apartments





# **Expand Personal Security & Property Crime Prevention Programs**

**DIANA TAYLOR, BCNA PRESIDENT**

# Personal Security/Property Crime Goals & Action (2023)

Reports from BCNA Survey (2021) & Stakeholder Meetings (2022)

## Increasing Threats to Personal Security and property—residents, employees

- Safeway & Starbucks violence—magnet for crime and hungry people
- Daylight assaults, robberies, vandalism—Gateway-Jackson Square hot spots
- Increase in Car Break-ins, Robberies
  - Northern Embarcadero parking lots, Jackson Square, Gateway-Sue Bierman park
- More mentally-ill and open drug users in the neighborhood

## SFPD Central Station (2022) comparison with all 10 stations

- #1 Car Break-ins (712)
- #3 Robberies (328)
- #7 Assaults (220)
- #5 Sexual Assaults (28)
- #9 Homicides (1)

- Near Term Goals: Improve lighting and surveillance cameras in Southern Barbary Coast (SF SafeCity Camera Program)
- Mid Term Goal: Add SFPD or City Community Ambassadors
- Mid Term Goal: Partner with Downtown Community Benefit District's Clean & Safe Streets Program



# Improvements & New Crime Prevention Tools



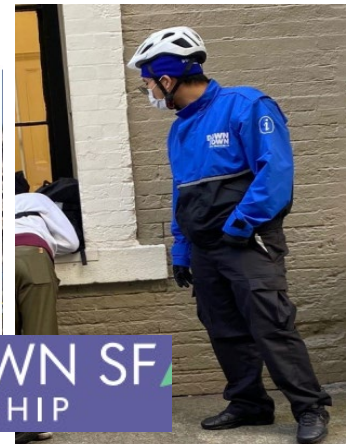
**Gateway Management & GTA:** new lighting, community events, SFPD appreciation program

**North Park/Jackson Square community events**

**BCNA-GTA events** in Walton Square including SFPD



SFPD/City Ambassadors



DOWNTOWN SF  
PARTNERSHIP



# SFSafe City Camera Program in the Barbary Coast (South End)

- High Quality cameras is one tool to extend SFPD capacity
- Cameras aimed at crime hot spots based on data & incidents
  - Hot Spots
    - Pacific/Front Street
    - Safeway/Starbucks
    - Vallejo-Jackson along Front St
    - Gateway open stairways, plazas/bridges
- Crime prevention in public space coverage
- High quality cameras installed, integrated across multiple buildings
- An opportunity extended to the BCNA includes subsidies
- Effective in SF communities: Chinatown, Japantown, Bayview





# BCNA Safety Plan: Goals, Actions, Progress & Results

## GOALS-ACTION-PROGRESS

- *Improve Pedestrian Safety*
  - **Improve** SFMTA Quick Build Projects
  - **Add** Traffic Calming improvements
  - **Add** Motorized scooter regulations
- *Reduce Community Disruption*
  - ↓ Speeding vehicles/Side Shows
  - ↓ Vehicular Noise
  - **Impact** State Legislation
- *Extend Personal Security and Property Crime Programs (in progress)*
  - SF Safe City Camera Program
  - SFPD/City Ambassador Program
  - Downtown CBD partnership

## Safety Committee Activities (2023)

- Continue to monitor/improve the QB Projects
- Complete SF SafeCity Camera Program Installation
- Chestnut/Embarcadero traffic improvements (wrong-way driving, emergency vehicle access)
- Sideshow enforcement (Embarcadero, Ferry Building, Washington St)
- Work with SF Port on property crime prevention—North Waterfront parking lots
- Motorized Scooter enforcement
- Improve lighting Vallejo-Jackson
- DowntownSF CBD partnership
- Pedestrian safety threats at base of Telegraph Hill (landslides to Parc Telegraph)